



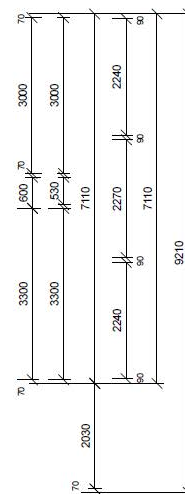
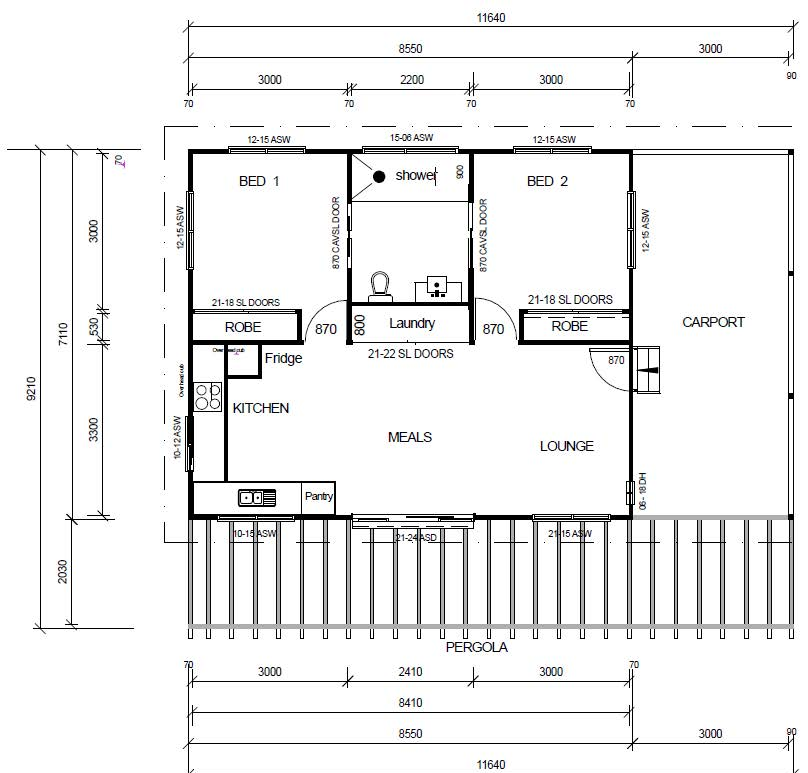
HERMES SERIES

From \$290K- Includes 6.6KW Solar System & Preliminaries



Introducing the Hermes Series

The Hermes is designed for indulgent family living, prioritizing space and privacy with bedrooms positioned on either side of the home. It features two expansive lounge areas for relaxation, a spacious kitchen with an island bench and under-bench seating for casual meals, and a generously sized dining area perfect for family gatherings. Its open layout allows natural light to flood the interior, creating a warm and inviting atmosphere. Whether entertaining family, enjoying quiet evenings, or hosting friends, the Hermes flawlessly combines functionality and comfort, making it the ideal sanctuary for today's modern family—crafted with every detail to meet your needs.



HERMES FEATURES

- 2 Bedrooms
- 1 Bathroom
- Open plan living/kitchen
- Large pergola area
- Carport

DIMENSIONS

Living Area	59.61m ²
Carport	22.22m ²
Pergola	24.4m ²
Total Area	106.23m ²