



SPRINGFIELD

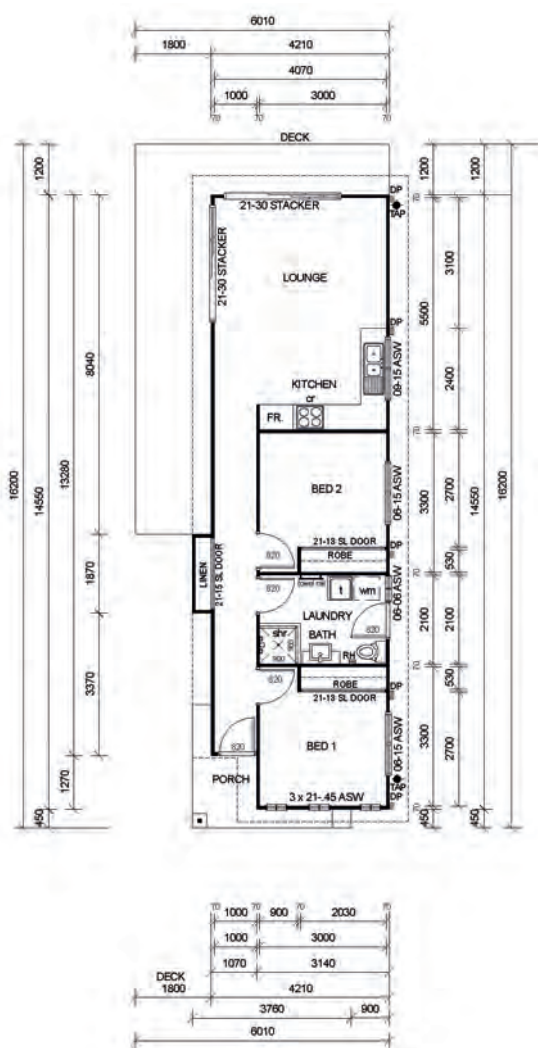
From \$ 280K - Includes 6.6KW Solar System & Preliminaries

SPRINGFIELD FEATURES

- 2 Bedrooms
- Bathroom/laundry
- Open plan living/kitchen
- L-shaped deck

DIMENSIONS

Living Area	59.9m ²
Deck	21.8m ²
Front Porch	4.7m ²
Total Area	86.4m ²



Introducing the Springfield Series

The Springfield is the perfect solution for affordable granny flat living, featuring a thoughtfully designed open-plan living and kitchen space that seamlessly integrates with a large L-shaped deck, providing ample room for family gatherings. The living area is strategically oriented around the outdoor entertaining space, enhancing the free-flowing feel of the floor plan and fostering a connection with nature.

Additionally, the base floorplan offers a complimentary upgrade option for an island bench with breakfast bar seating, catering to modern lifestyles. The Springfield design effectively meets the needs of today's small families, making it a practical and stylish choice for comfortable living.